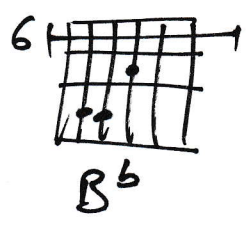
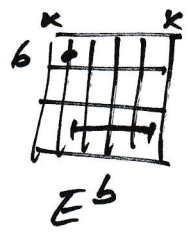
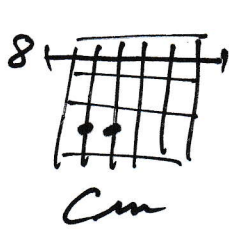


DESOLE POUR HIER SOIR

Tryo

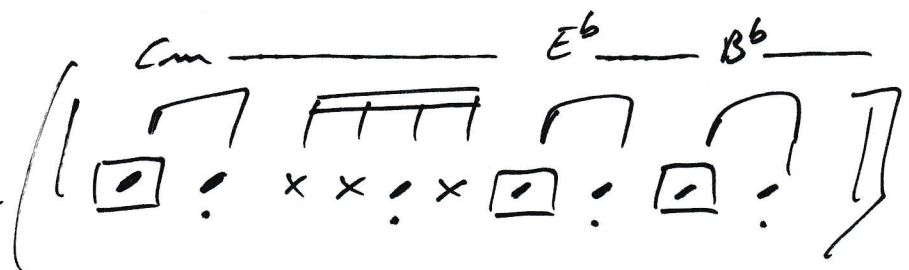


(Cm | Eb / Bb)

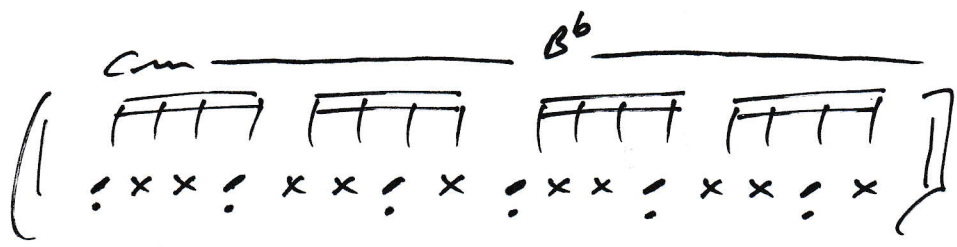
Complets
+
Refrain

(Cm / Bb)

Pont



Rythmique [A]



Rythmique [B]

☐ = On ne joue que la basse.

! = Accord piqué (staccato)

TABBED BY
GALAGOMUSIC.COM